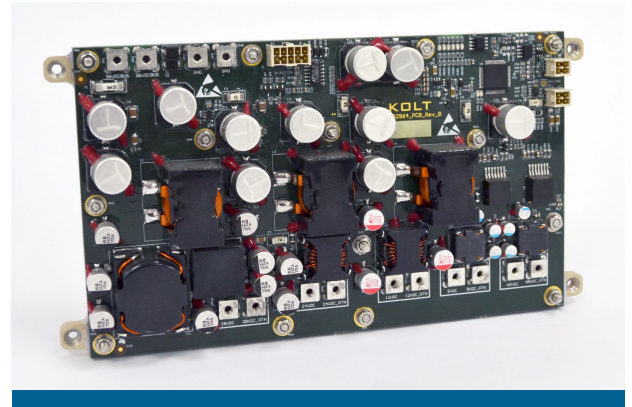


GDK1006
550W DC/DC PoL Converter

KOLT

Features

- 20-36 Vdc Input
- 28 Vdc Output
- 24 Vdc Output
- 12 Vdc Output
- 5 Vdc Output
- -5 Vdc Output
- %98 Efficiency
- 550W Power
- Conformal Coated
- Cooler Plate

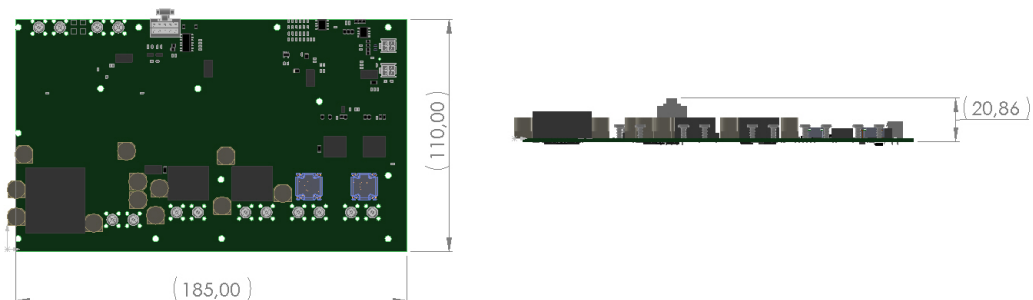


GDK1006 is a 550W DC/DC PoL Converter that operates at nominal 28 Vdc input and generates different output voltage. The cooling plate on this converter includes a mounted thermal pad.

GDK1006 board uses minimum component count possible thus resulting high level performance outputs with low cost. Compact design, low weight and robust structure features of this device, gives users multi-function usage options for most demanding thermal environments on our planet.

Input Voltage	20-36 Vdc Input
Output Voltage	28 Vdc Output, 24 Vdc Output, 12 Vdc Output, 5 Vdc Output, -5 Vdc Output
Environmental Test	
Temperature	-30°C to +50°C (Operating Temperature) -40°C to +65°C (Storage Temperature)
Humidity/Vibration	MIL-STD-810D
Low Pressure	MIL-STD-810F
Shock/Sand and Dust/Corrosion	MIL-STD-461G
Physical Features	
Dimensions	185 x 110 x 20.86 mm

Outline Drawing(mm)



For additional details please contact KOLT.
 All Rights Reserved.
 Product specifications may change without notice.
info@kolt.com.tr
www.kolt.com.tr