

GDK2001 Non-Isolated Bidirectional Power Board

KOLT

Features

- Output Regulated by AC/DC Converter or DC/DC Battery Charger
- Regulated Output between 32V - 28V
- Input Power Charges Battery and Simultaneously Power Load
- Automatically Switches Over to Battery Power When External Removed
- Battery Fuel Indicator
- State of Charge Indicator
- Built-In-Test (BIT)
- RS422/485 Interface
- On - Off Switch to Power Down Circuit During Storage
- Constant Current Mode
- Constant Voltage Mode



GDK2001 Non-Isolated Bidirectional Power Board is a unit that, when fed with city power line gets fed with (28VDC-32VDC) Input. When supplied from AC / DC converter, it charges the batteries according to the healthiest smart battery charging protocol. The unit adjusts the percentage zone that these modes will occupy during the charging time according to the battery voltages.

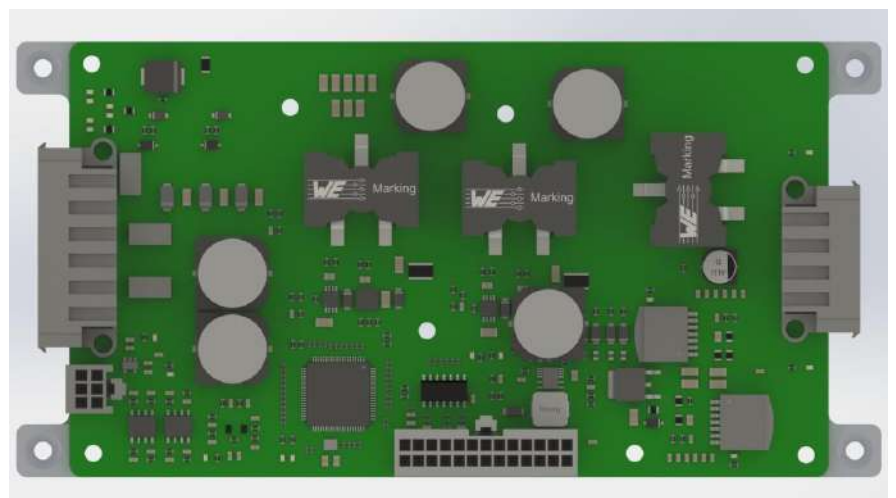
The built-in microprocessor runs an embedded software that collects card-related information. It can send card-related information or receive specific commands via the communication interface.

Output;

- 32V to 28V, regulated by AC / DC converter or DC / DC Battery Charger,
- 5,4V BUS voltage regulated by GDK,
- 48 VFAN voltage, regulated by GDK.

Input Voltage	20 - 34 Vdc Input
Output Voltage	28 - 32 V 48 VFAN Output
Environmental Test	Designed to meet;
Temperature	-40°C to +65°C (Storage Temperature) -30°C to +50°C (Operating Temperature)
Humidity/Vibration	MIL-STD-810G
Low Pressure	MIL-STD-810F
Shock/Sand and Dust/Corrosion	MIL-STD-810G
Physical Features	
Dimensions	163 x 82 x 30 mm

Mechanical Drawing



For additional details please contact KOLT.
All Rights Reserved.
Product specifications may change without notice.
info@kolt.com.tr
www.kolt.com.tr