

### Features & Benefits

- True 3-Phase AC input
- Rugged Unit for Military Applications
- 90% Efficiency at Full Load
- Wide Input Voltage Range
- Built-in Active PFC Function
- Internal ORing Diode
- Multiple Units in a Redundant or Parallel System
- Droop Current Sharing
- IP67 Sealed
- RS485 Communication
- Temperature Sensor
- Power Good Signal
- Input Under Voltage Protection
- Input/Output Over Voltage Protection
- Input Over Current Protection
- Short Circuit Protection
- Over Temperature Protection
- Reverse Battery Protection
- Two Units can be Mounted in 1U Height 19" Rack
- On/Off Switch
- LED Indicators
- Forced Air Cooled
- Grounding Interface

### Compliance

Module is designed to meet:

- MIL-STD-461G
- MIL-STD-810G
- MIL-STD-1275E

### Typical Applications

- Military/Defense Power Systems
- Armored Vehicles
- Land Platforms
- Communications and Radar Systems

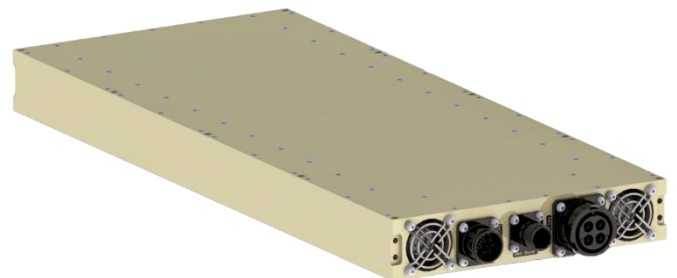
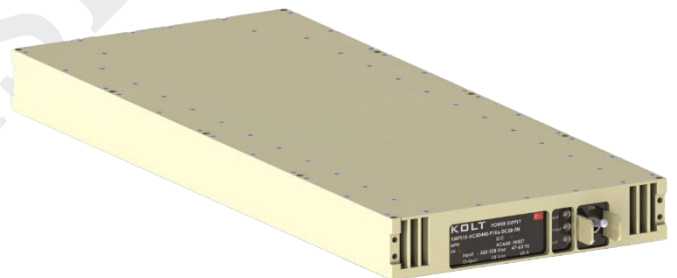
### Product Ratings

$V_{IN}$	360–528 $V_{LL\_RMS}$ (Three-Phase)
$V_{IN\_NOM}$	440 $V_{LL\_RMS}$
$V_{OUT}$	28 $V_{DC}$
$I_{OUT}$	60 A
$P_{OUT}$	1680 W

### Product Description

KMPS15 is an advanced single-phase AC-DC power supply unit with active PFC function. It operates in constant current (CC) and constant voltage (CV) modes effectively, providing best-in-class regulation and dynamic performance.

The unit is designed to guarantee high performance under extreme environmental conditions with superior protection features against external faults and disturbances while meeting the major military standards. KOLT's innovative engineering has enabled a compact design of the converter with high efficiency.



**Size:** 530 x 215.9 x 44 mm  
(19"/2 form factor, 1U height)

**Weight:** 8 ± 0.5 kg